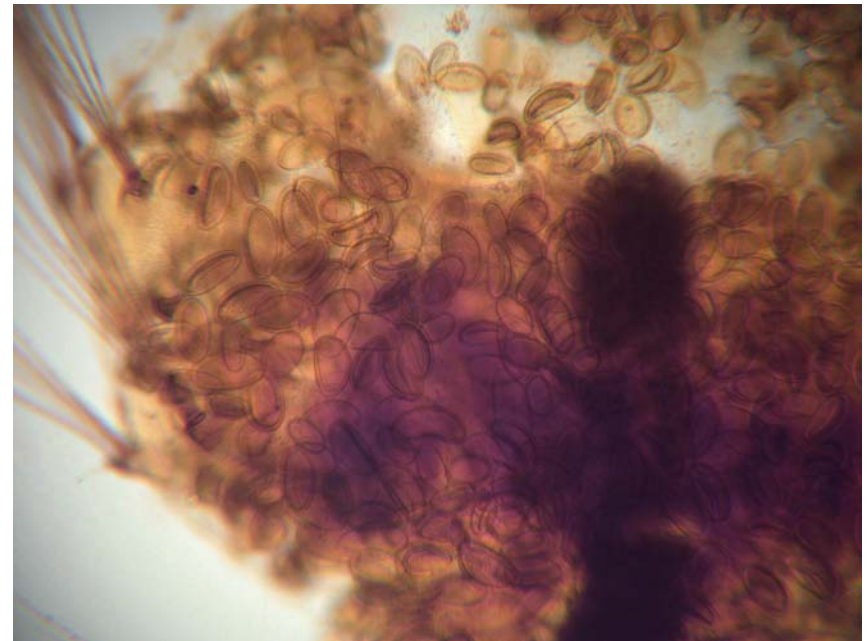
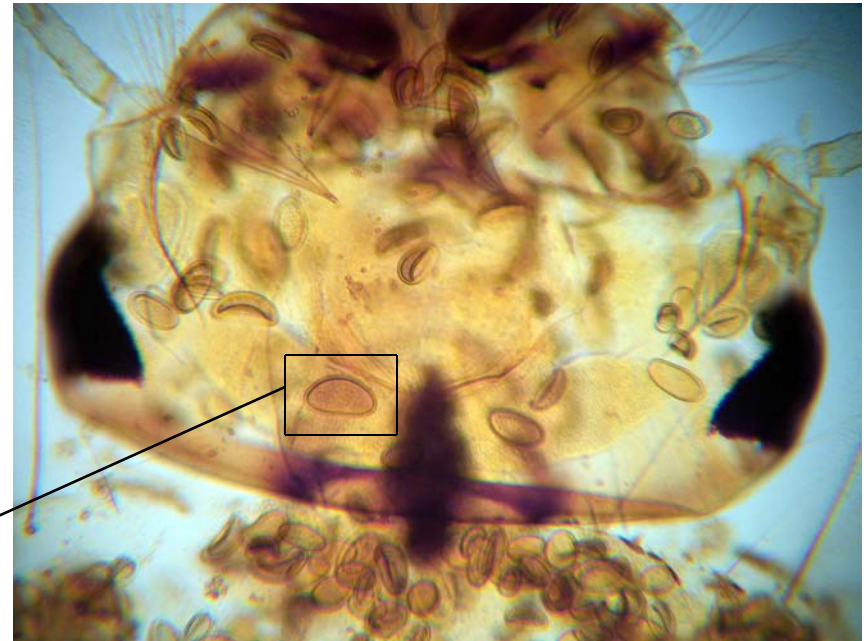
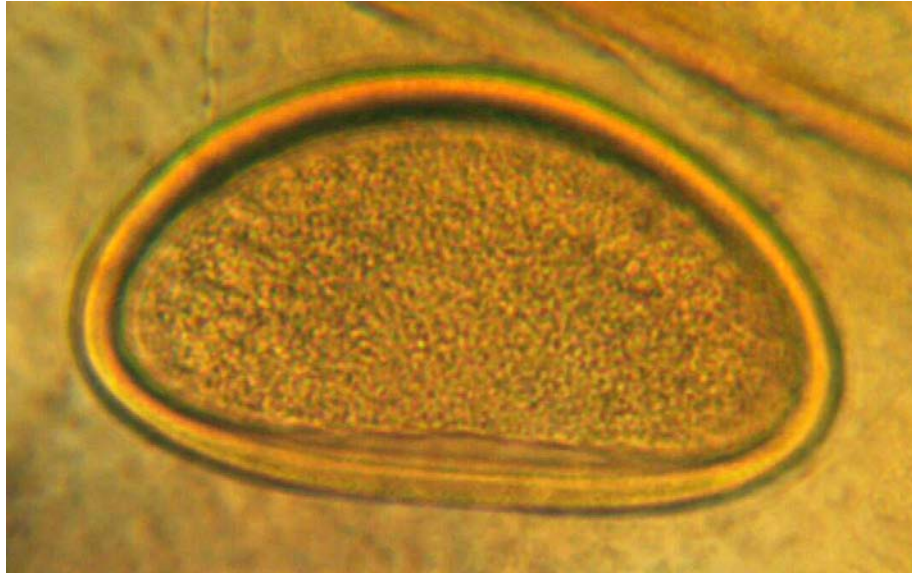
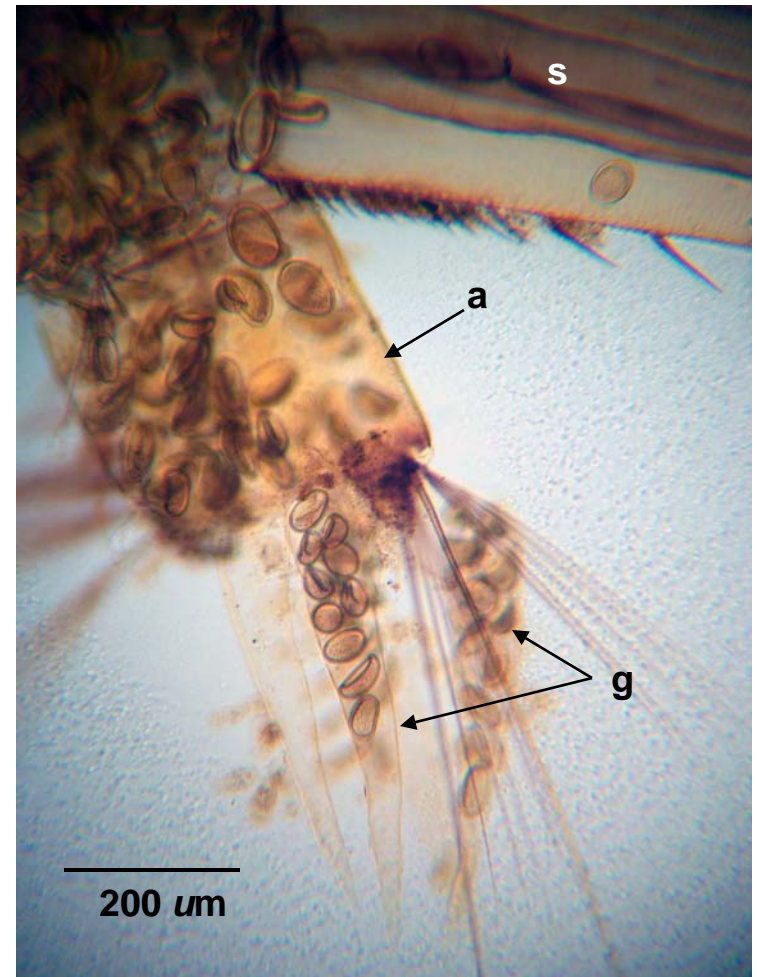
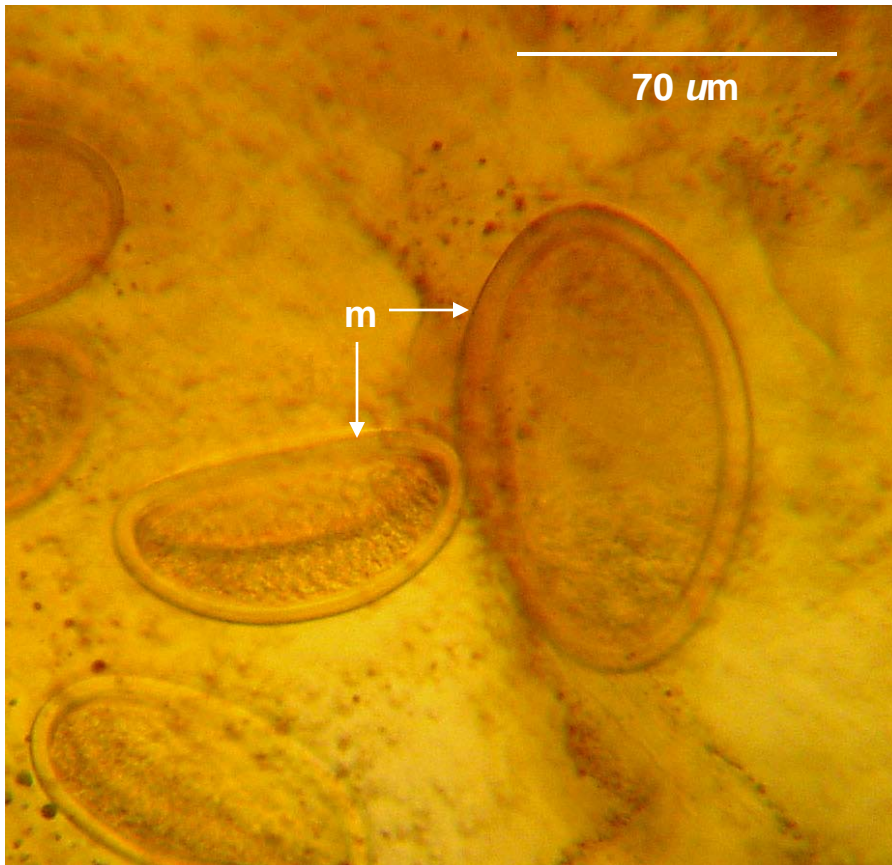


Coelomomyces (sp. 1?) spores in head capsule and thorax of *Aedes vexans*. Spore, enlarged, from base of head capsule.



Coelomomyces (sp 1?) ex: *Aedes vexans* 4th instar.

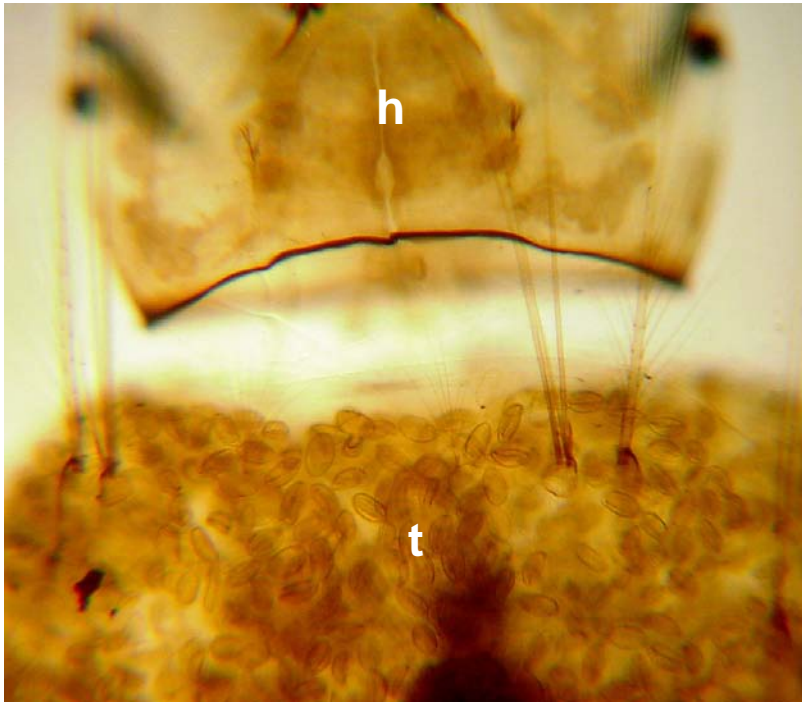
Smooth spore margin (m) sets this species apart from spores in *An. punctipennis*. Note: Spores found throughout the body of this larva, extending into the siphon (s), anal segment (a), and anal gills (g).



Coelomomyces (sp. 2?) spores – ex: *Anopheles punctipennis*.
Note “rough” spore margin (arrows). Scale bar = 70 μm .



Coelomomyces (sp 2?) – ex:
Anopheles punctipennis 4th
instar. h = head capsule;
t = thorax. Note “rough” outer
margin (arrows) distinguishing
this spore type from “sp 1” found
in *Ae. vexans*.



A: *Coelomomyces* (sp. 3?)
in *Anopheles punctipennis* 4th
instar larva (head capsule and
thorax). B: spore, enlarged (in
4th abdominal segment).

